

# FOREST HEALTH IN SLOVAKIA IN 2014

**Andrej KUNCA**

Milan ZÚBRIK – Juraj GALKO – Jozef VAKULA

Roman LEONTOVYČ — Slavomír RELL – Christo NIKOLOV

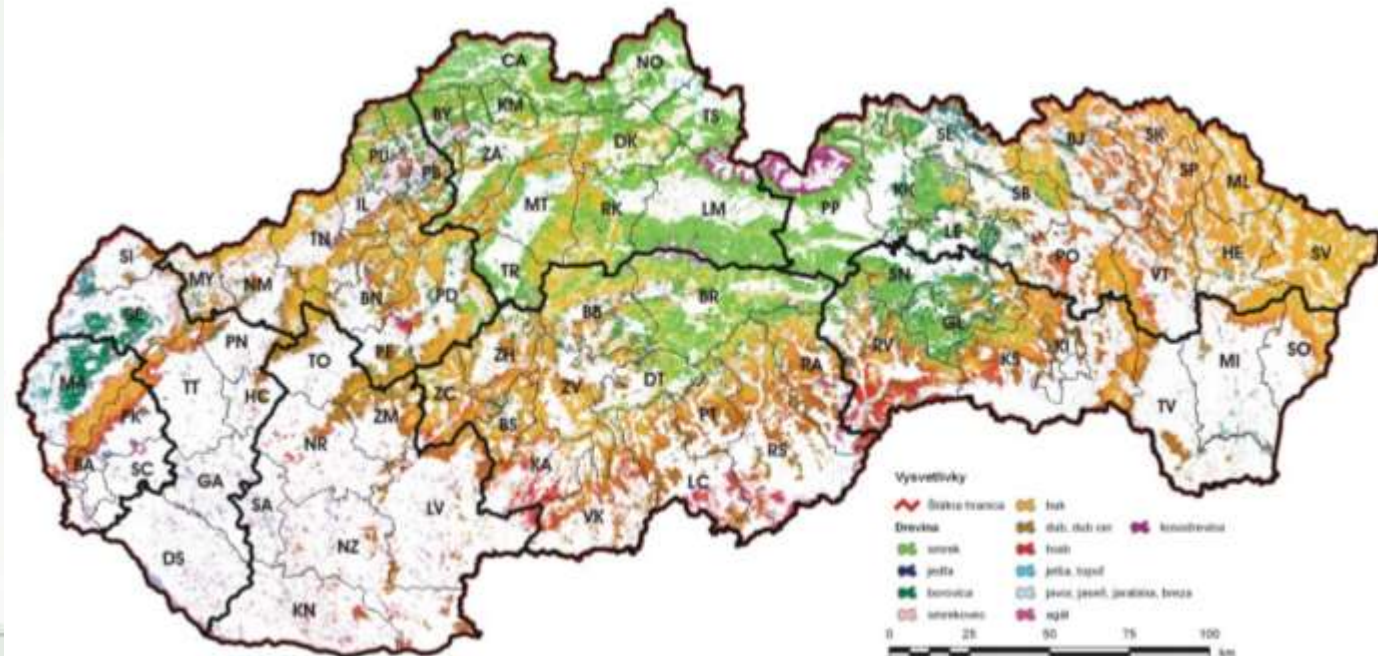
Bohdan KONÔPKA – Valéria LONGAUEROVÁ

Andrej GUBKA – Peter KAŠTIER – Miriam MAĽOVÁ

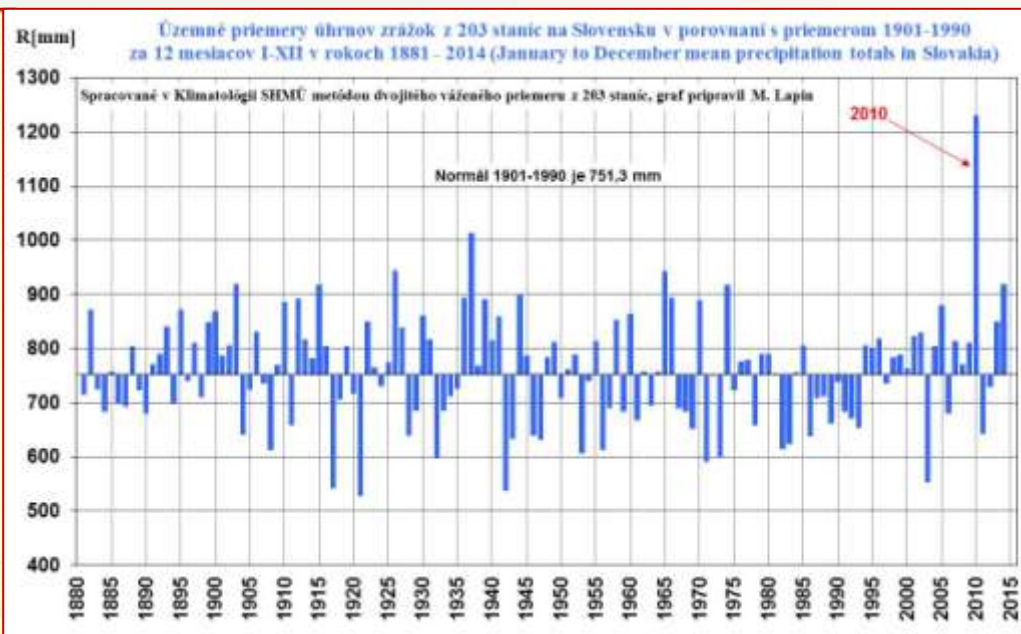
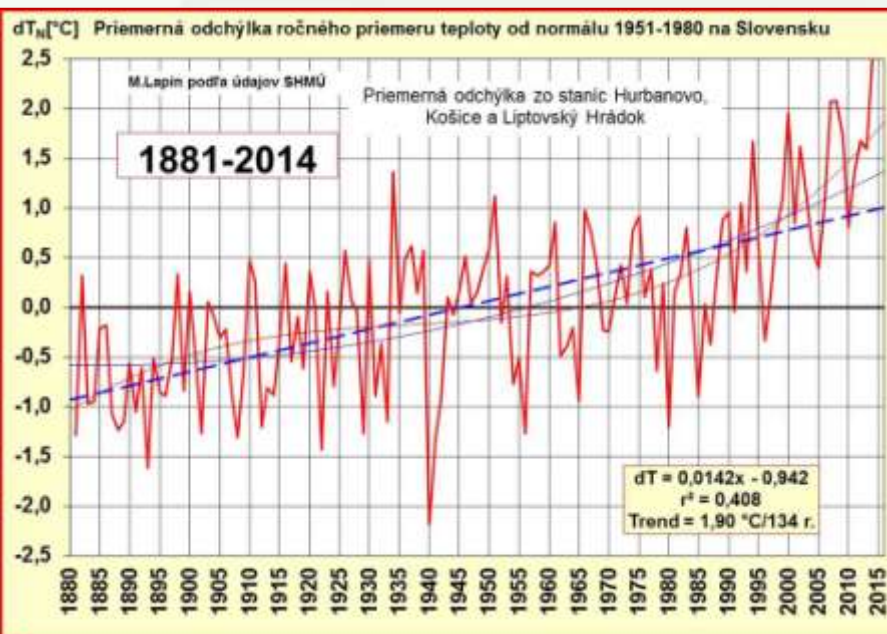
Slavomír FINĎO

# Forests in Slovakia

- 2 mil. ha – forest coverage 40 %
- Wood storage: 452 mil. m<sup>3</sup>
- Tree composition:
  - *Fagus sylvatica* 31.6 %
  - *Picea abies* 25.5 %
  - *Quercus* spp. 10.7 %
  - *Pinus* spp. 7.0 %
  - *Abies alba* 4.1 %



# Weather



<http://www.milanlapin.estranky.sk/fotoalbum/klimatologicke-grafy/>

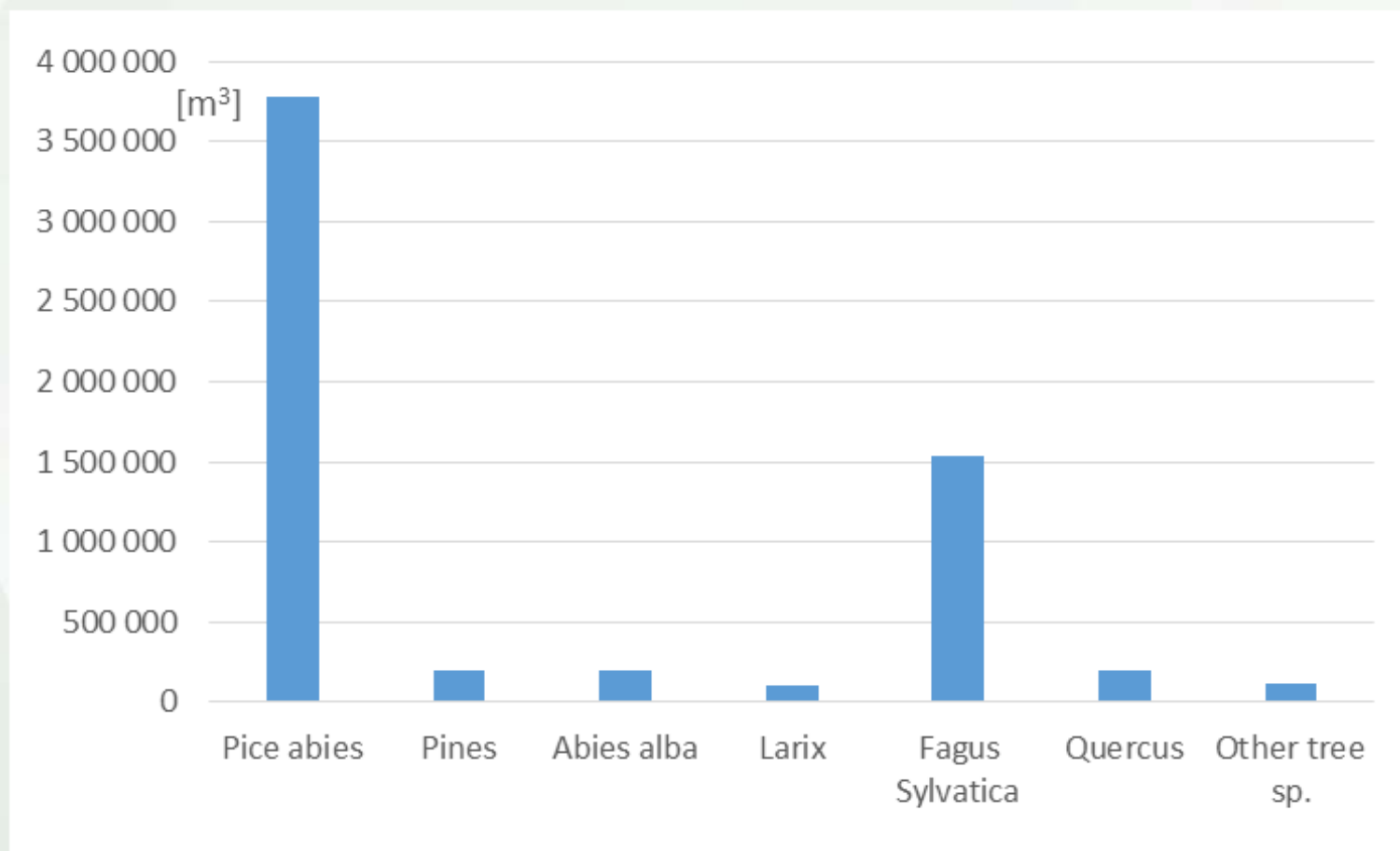
[http://www.dmc.fmph.uniba.sk/public\\_html/climate/RHurbanovo.htm](http://www.dmc.fmph.uniba.sk/public_html/climate/RHurbanovo.htm)

# Cutting

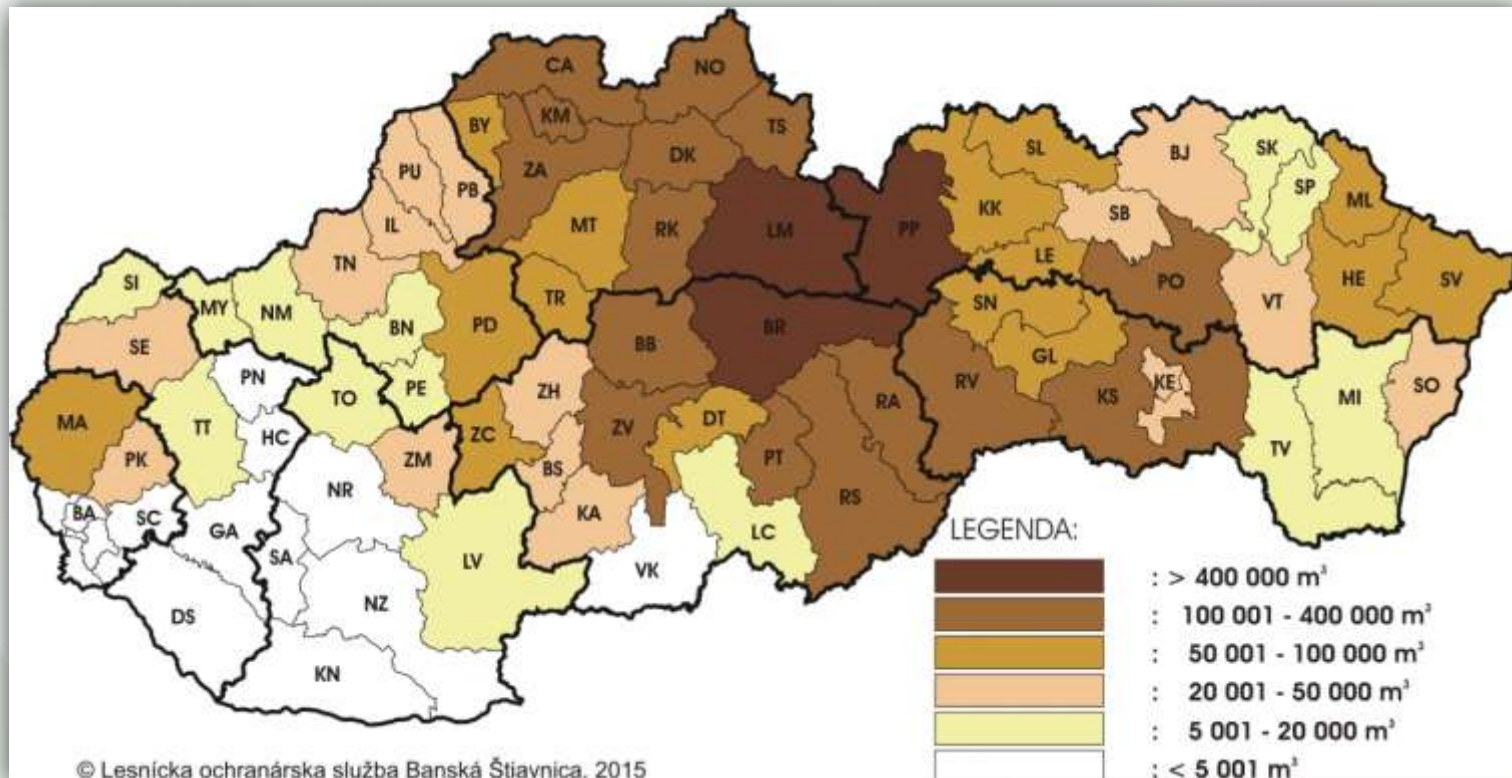
Major Groups of Pest Agents	Salvage Cutting			Total cutting
	Coniferous	Broadleaved	Total	
Abiotic Pest Agents (5)	3 313 439	1 809 236	5 122 675	
Anthropogenic Pest Agents (6)	38 759	9 135	47 894	
Biotic Pest agents (42)	942 203	29 088	971 291	
<b>Total</b>	<b>4 294 401</b>	<b>1 847 459</b>	<b>6 141 860</b>	<b>9 721 167</b>

63.2 %

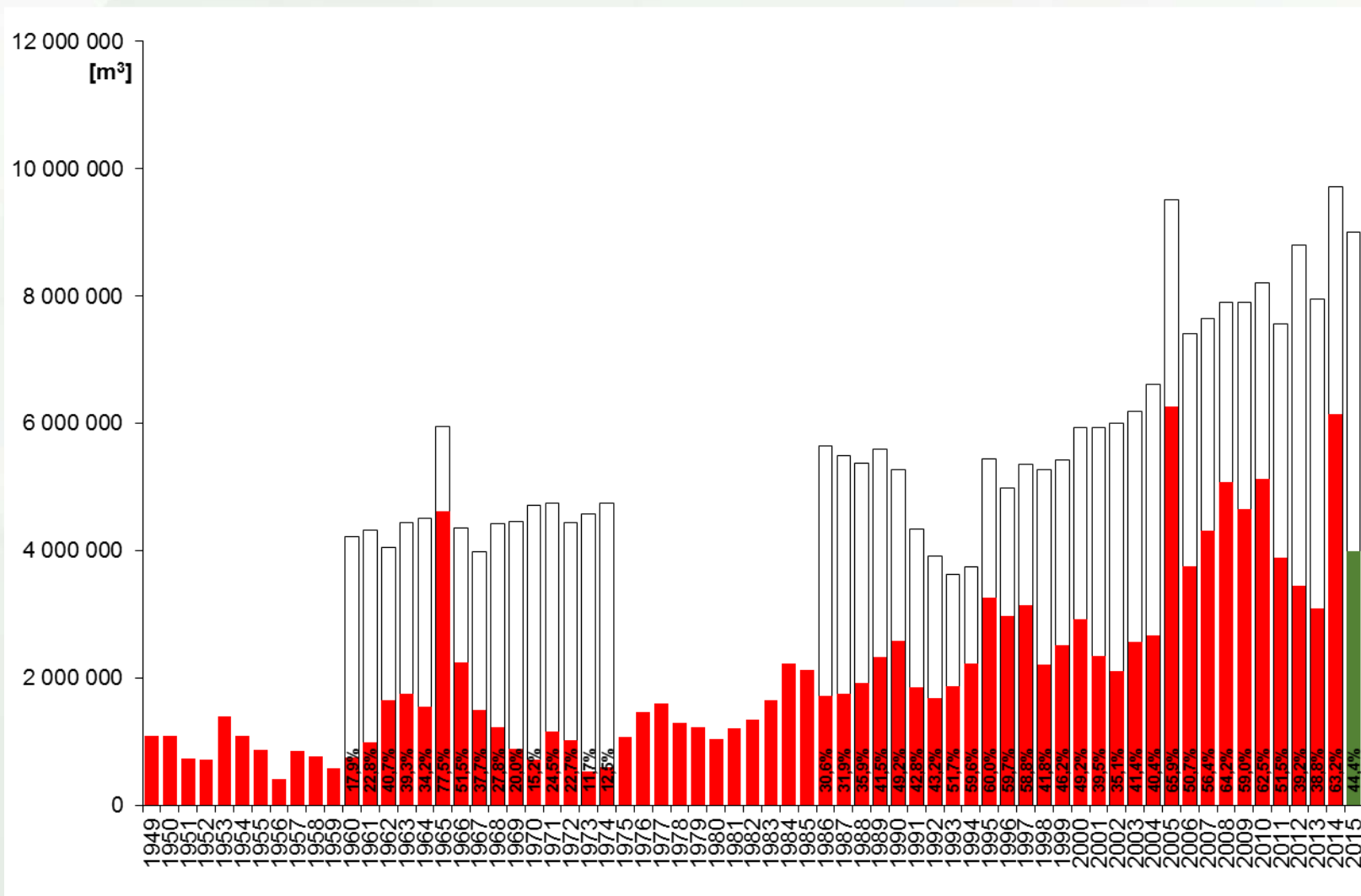
# Salvage cutting by tree species 2014



# Salvage cutting



# Salvage cutting



# Windstorm Žofia

## 15.5.2014

Wind speed:  
**165 km.h<sup>-1</sup>**

meteorological station:  
**Chopok, Central Slovakia**





# Windstorm Žofia

## 15.5.2014

Wind speed:  
**165 km.h<sup>-1</sup>**

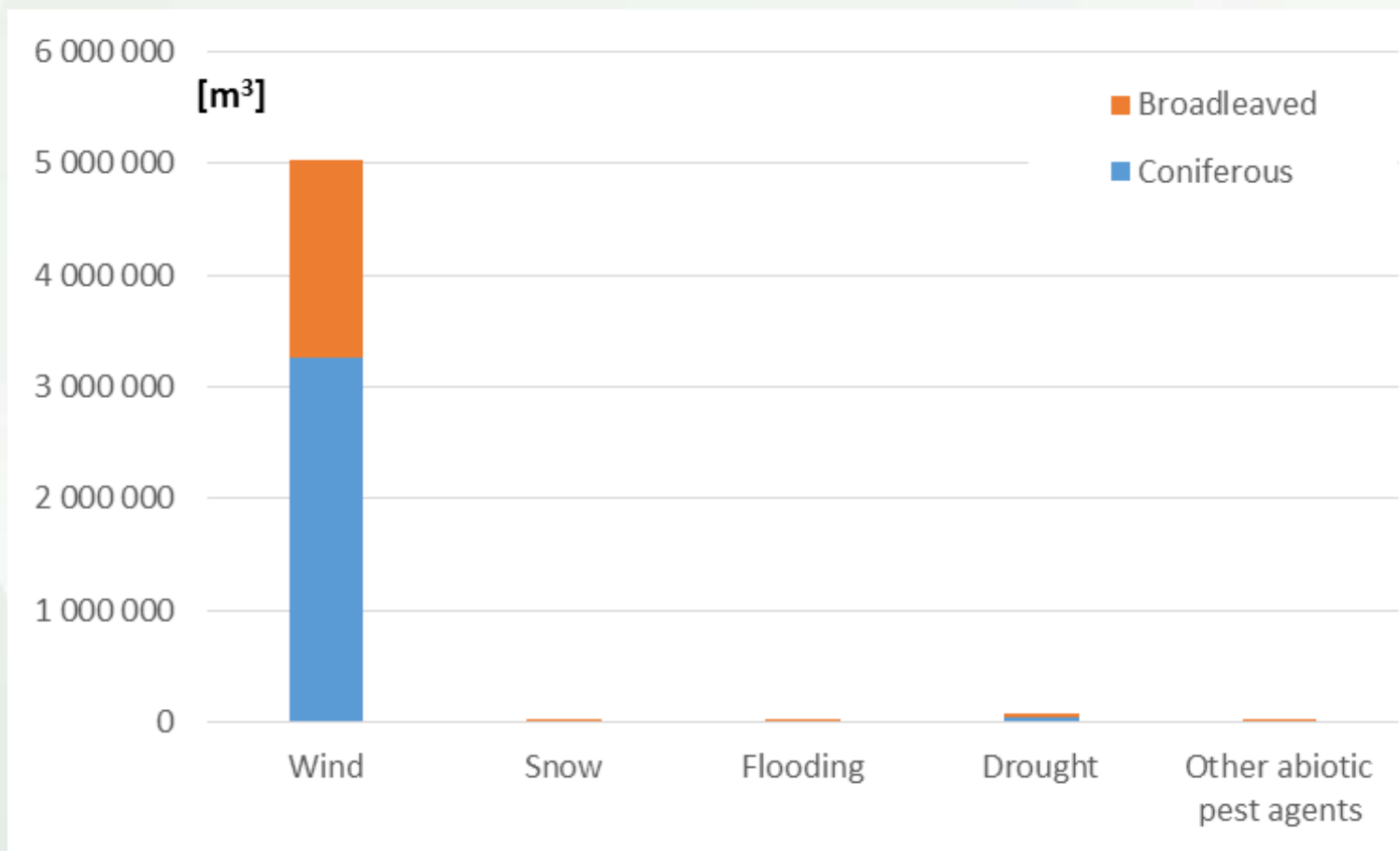
meteorological station:  
**Chopok, Central Slovakia**



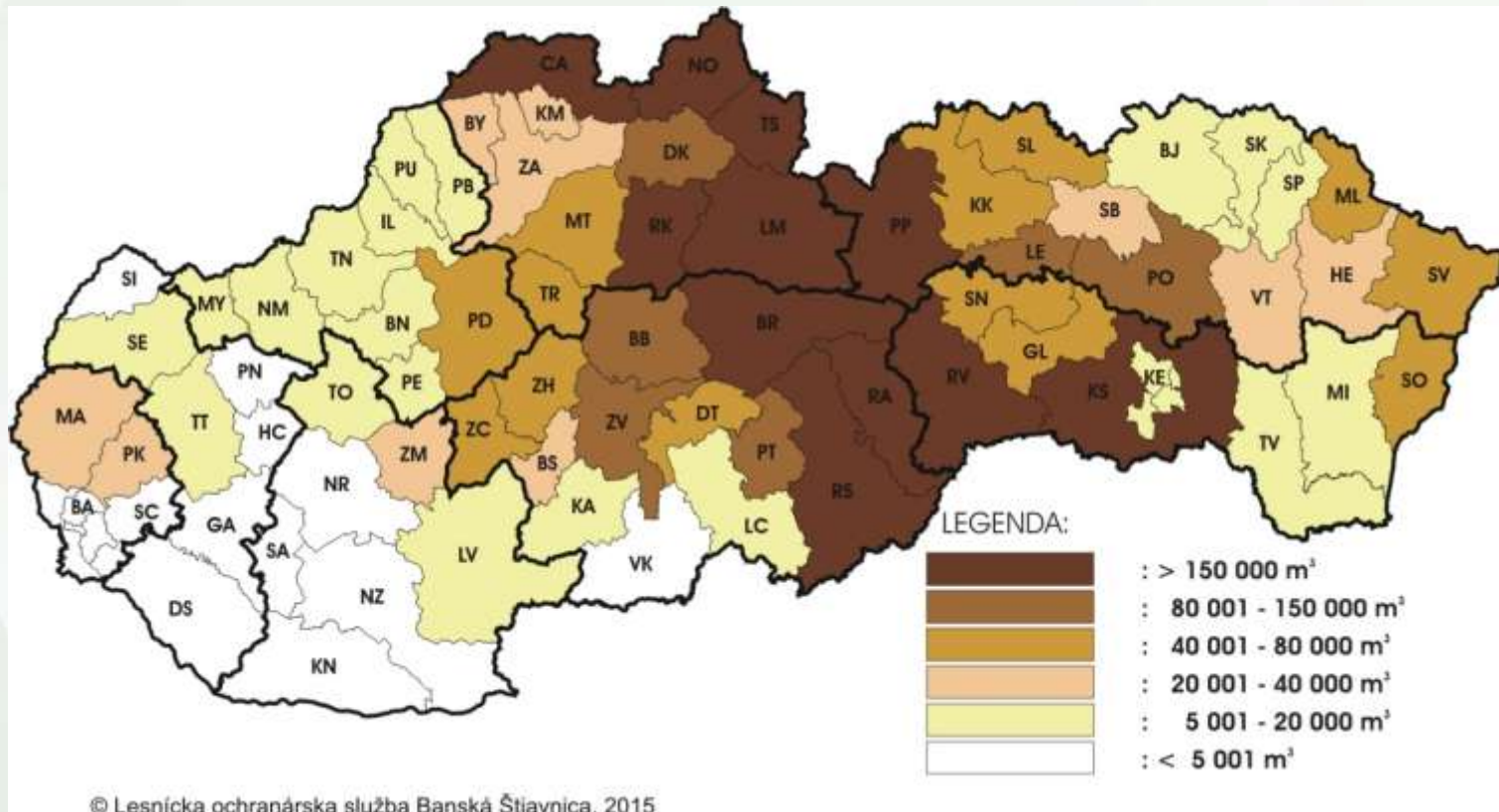
# Major disturbances

Type of disturbance (date of its occurrence)	Estimated disturbance volume [mil. m <sup>3</sup> ]	Major damaged tree species (its proportion on total calamity volume)	Affected region in Slovakia
Windstorm "Alžbeta" (November 19, 2004)	5.3	Picea abies (90 %)	from North-Central to south-Central
Snowfall "Tamara" (January 2006)	0.5	Picea abies (87 %)	Northern
Windstorm "Kiryll" (January 18 to 19, 2007)	0.4	Picea abies (90 %)	Central
Windstorm "Filip" (August 23 to 24, 2007)	1.0	Picea abies (60 %)	South-Central
Windstorm „Gizela“ (May 17 – 19, 2010)	0.5	Fagus sylvatica (80 %)	South-Western
Windstorm Žofia (May 15, 2014)	5.2	Fagus sylvatica (70 %)	from North-Central to south-Central
Ips typographus (from 2004 to 2013)	16.4*	Picea abies (100 %)	North and Central
Armillaria spp. (from 2004 to 2013)	2.2*	Picea abies (90 %)	West-Northern
<b>Total</b>	<b>26.3</b>	---	---

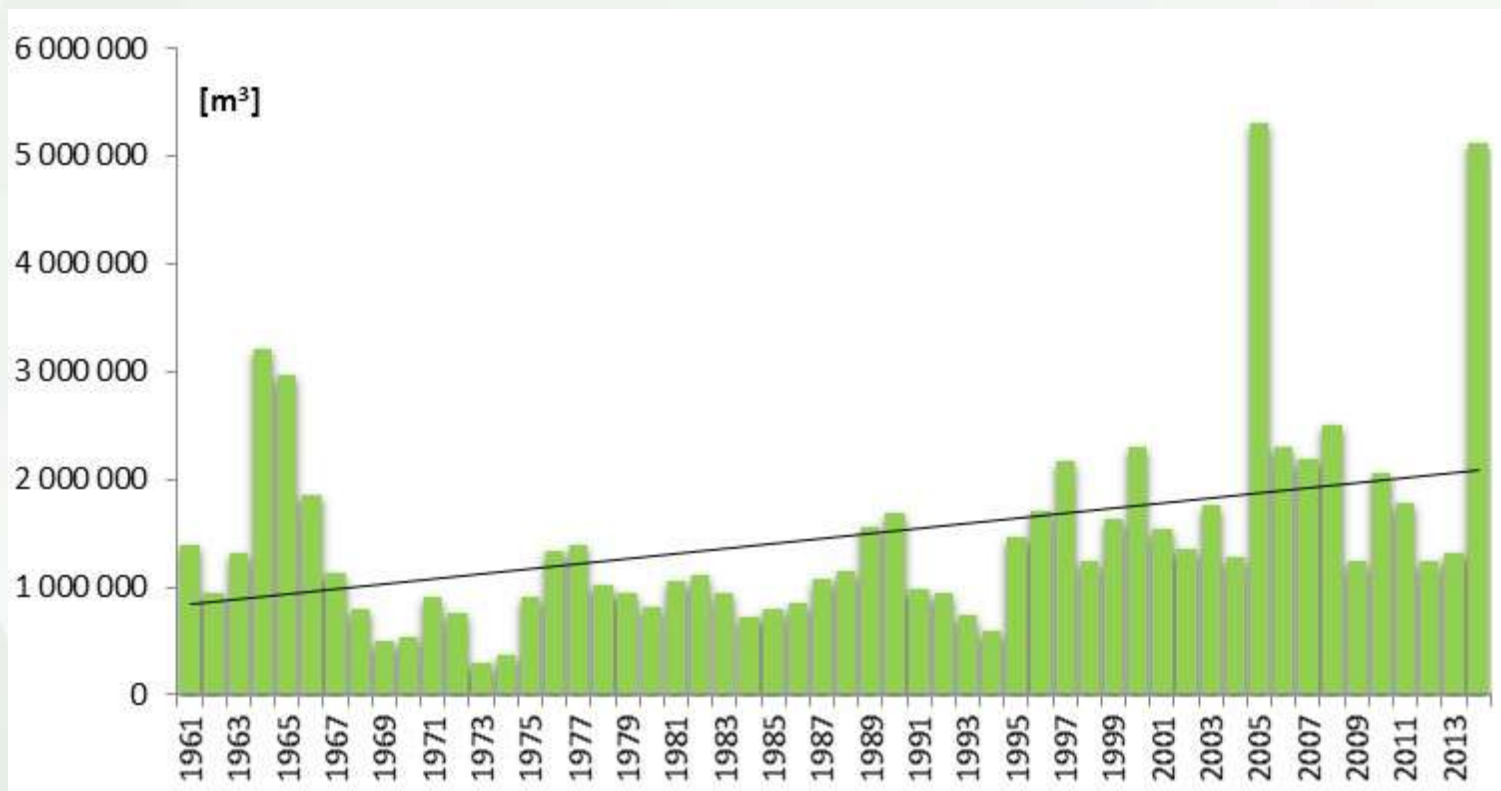
# Abiotic Pest Agents



# Abiotic Pest Agents

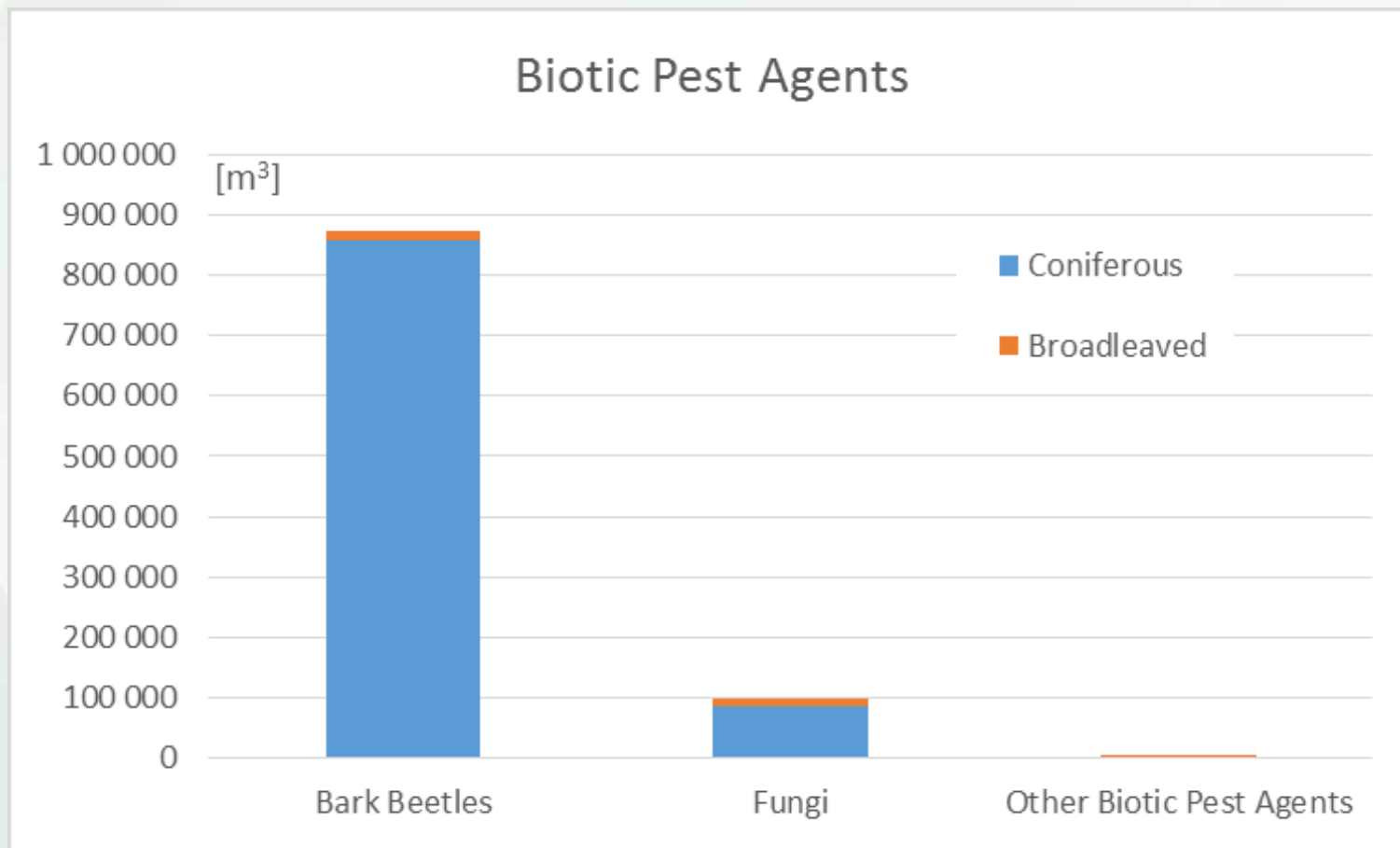


# Abiotic Pest Agents



# Biotic Pest Agents

## Bark Beetles



# Biotic Pest Agents



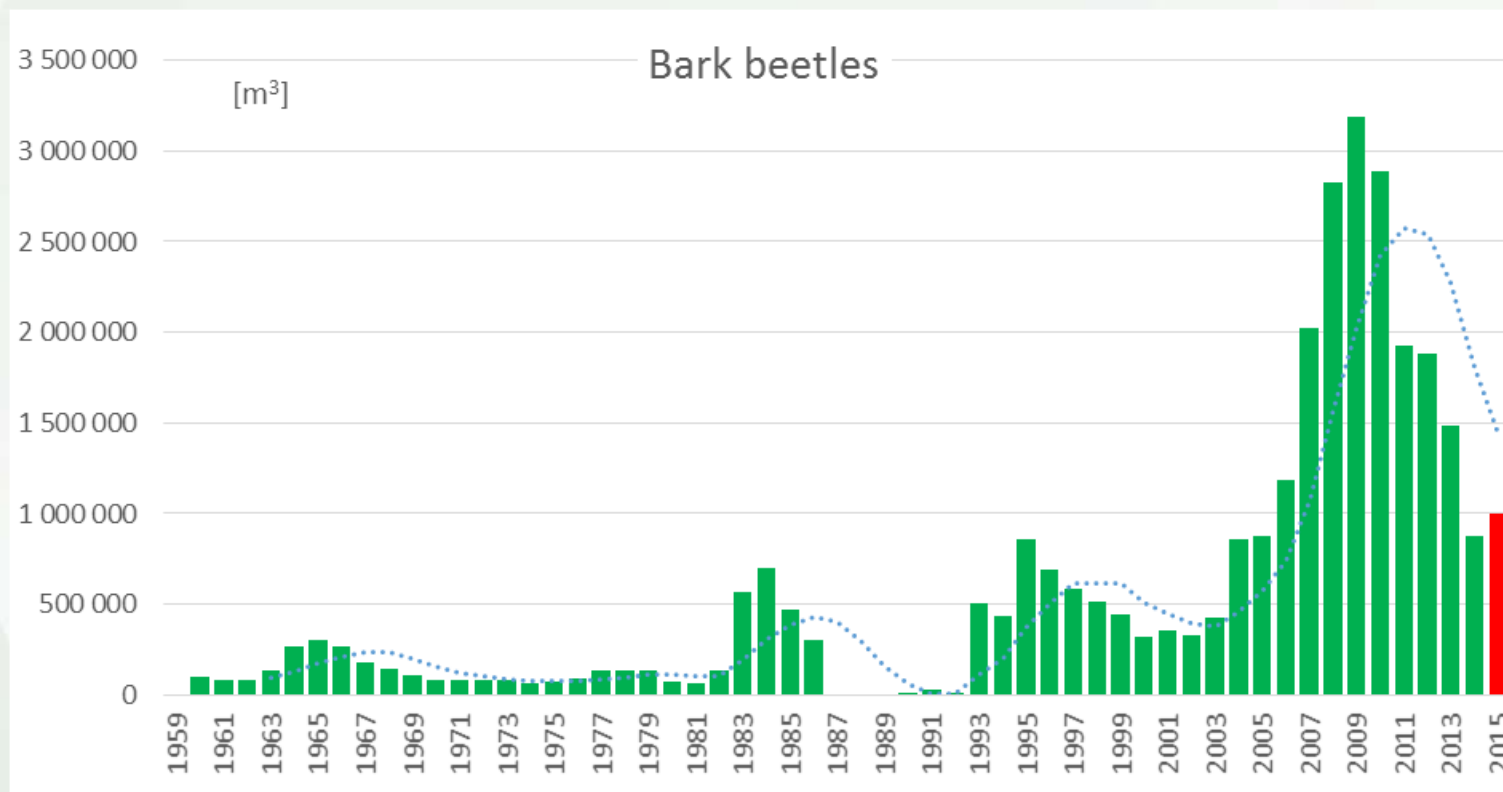
# Biotic Pest Agents



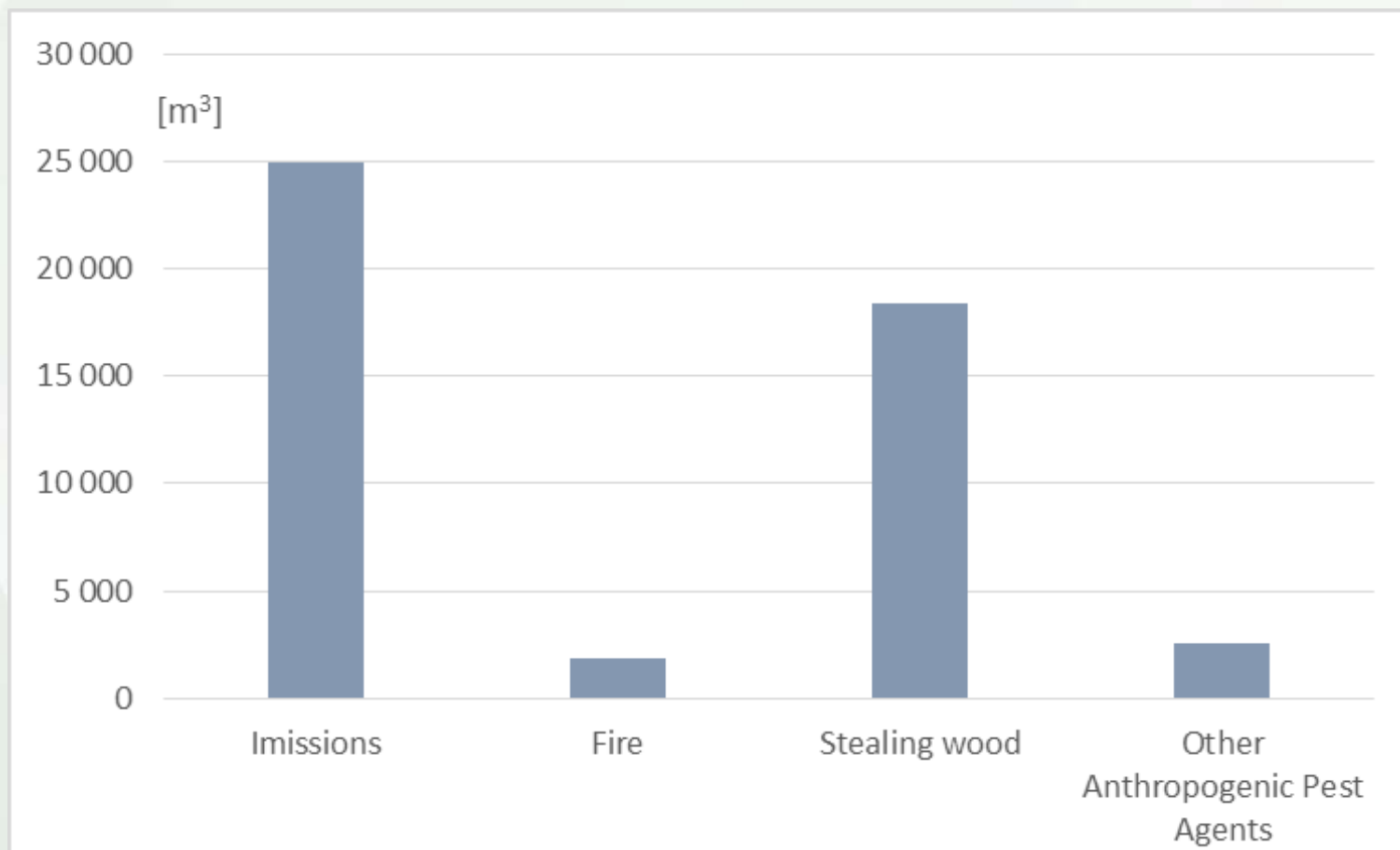


# Biotic Pest Agents

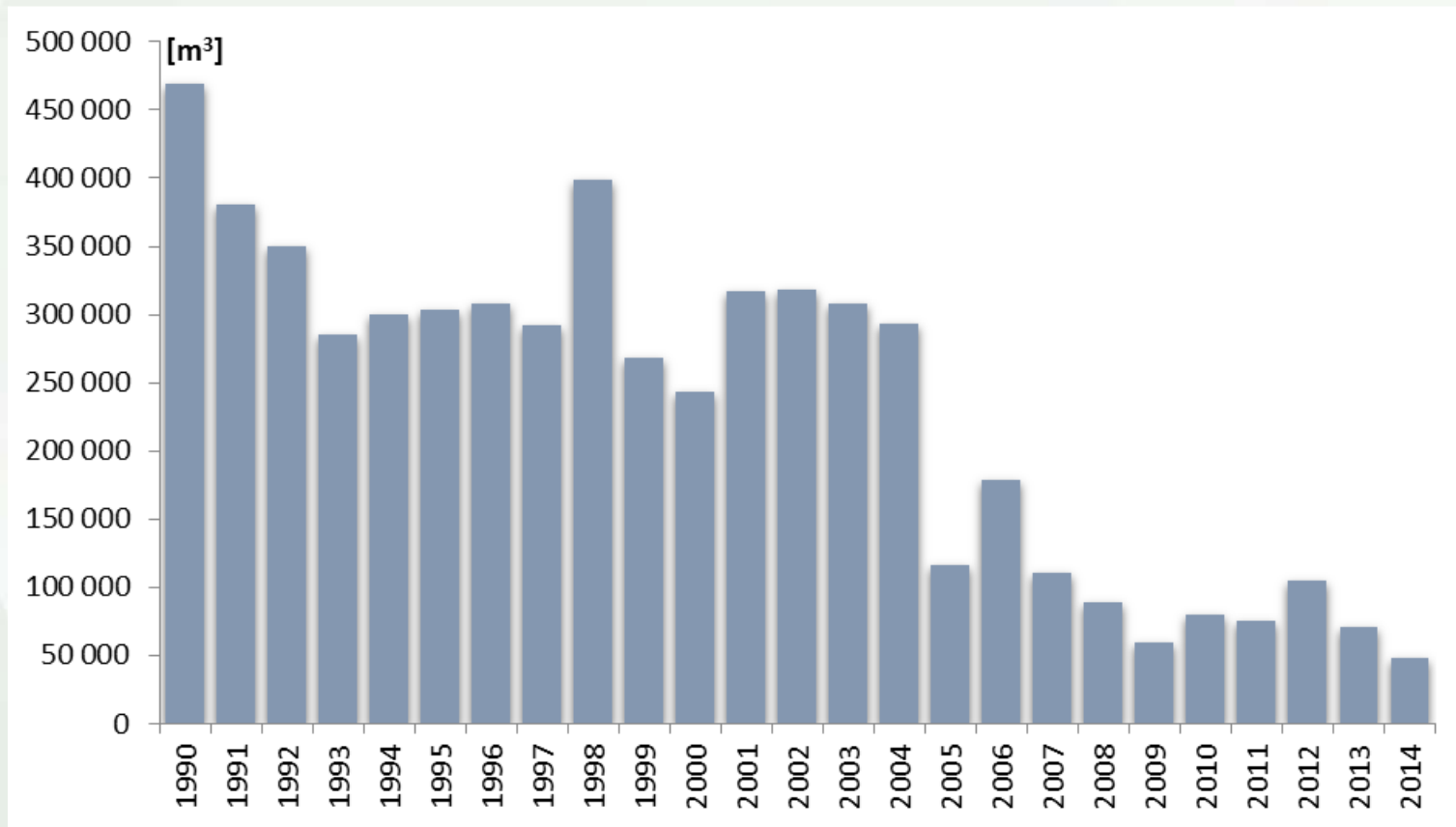
## Bark Beetles



# Anthropogenic Pest Agents



# Anthropogenic Pest Agents



## REFERENCES

- **KUNCA A., ET AL., 2015: Signalizačné správy** o výskyte škodlivých činiteľov v lesoch Slovenska. č. 2/2015 z 26.8.2015, 11 pp. Zdroj: <http://www.los.sk/signal.html>. Preverené na internete: 20.10.2015.
- **KUNCA A., ET AL., 2015: Signalizačné správy** o výskyte škodlivých činiteľov v lesoch Slovenska. č. 1/2015 z 30.6.2015, 7 pp. Zdroj: <http://www.los.sk/signal.html>. Preverené na internete: 20.10.2015.
- **KUNCA, A. (ED), 2015: Aktuálne problémy v ochrane lesa 2015. Zborník** referátov z medzinárodnej konferencie konanej 29.-30.1.2015 v Kongresovom centre Kúpeľov Nový Smokovec, a.s., Národné lesnícke centrum, Zvolen, 142 pp.
- Viac publikácií: <http://www.los.sk/publikacie.html>

## INVITATION

### Aktuálne problémy v ochrane lesa 2016

– medzinárodná konferencia o ochrane lesa v Novom Smokovci sa bude konať

**28.-29.1.2016**

Srdečne všetkých pozývame. Sledujte [www.los.sk](http://www.los.sk) pre viac informácií.

# THANKS FOR YOUR ATTENTION

This paper was supported by  
*Agency for research and development (APVV)*  
Contract No. APVV-0707-12

***Výskum vplyvu disturbančných faktorov na dlhodobý vývoj zdravotného stavu lesov Slovenska  
Research of Disturbance Factors Affecting Long Lasting Development of Slovak Forest Health***

and

Agricultural Paying Agency  
***Príprava metodiky, vývoj a zavedenie interaktívneho nástroja pre Mapovanie výskytu  
škodlivých činiteľov (ďalej len „MAVYSK“) lesných drevín***





# CONTACT

## FOREST PROTECTION SERVICE CENTRE

National Forest Centre  
Forest Protection Service Centre  
Lesnícka 11  
969 01 Banská Štiavnica  
Slovakia

Tel.: 045-691 1144  
Mobil: 0902-712 964

Email: [los@nlcsk.org](mailto:los@nlcsk.org)

<http://www.los.sk>

<https://www.facebook.com/losbstiavnica>

